



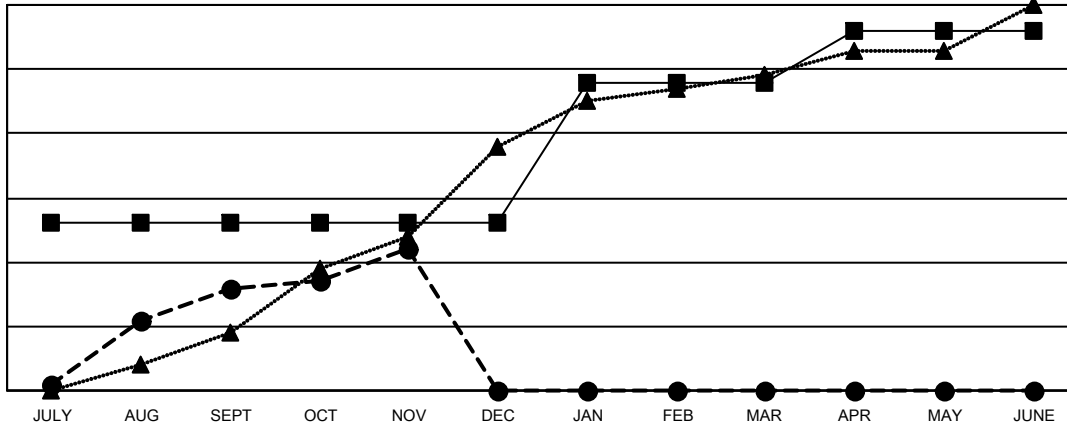
GMT: OPEN

GMT CA 6 - S

Clubs			
RESULTS FOR 2023-2024			
QUARTER	NEW CLUB GOAL	NEW CLUBS	DROPPED CLUBS
JULY/AUG/SEPT	26	16	0
OCT/NOV/DEC	0	6	1
JAN/FEB/MAR	22	0	0
APR/MAY/JUNE	8	0	0

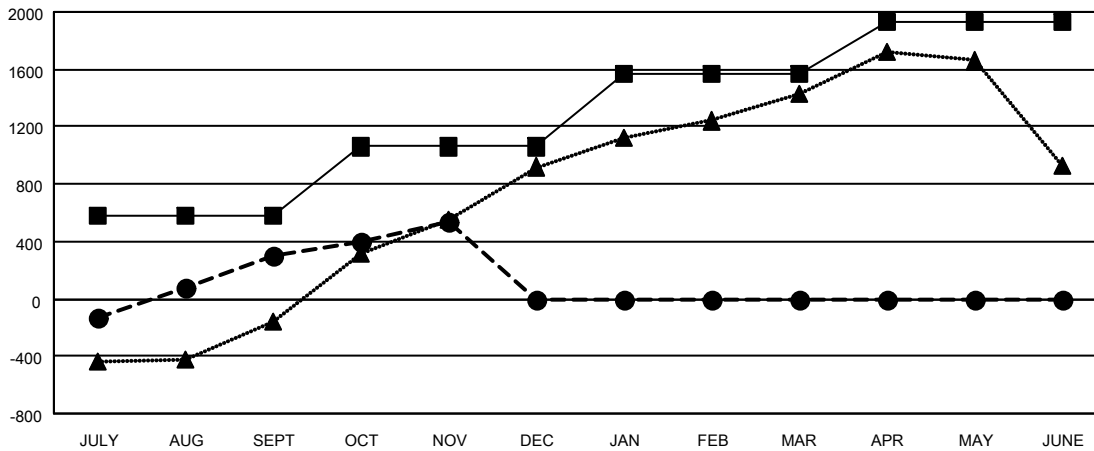
Members			
RESULTS FOR 2023-2024			
QUARTER	MEMBER GROWTH NET GOAL	MEMBER GROWTH ACTUAL	DROPPED MEMBERS ACTUAL (including transfers)
JULY/AUG/SEPT	585	1,041	617
OCT/NOV/DEC	475	711	413
JAN/FEB/MAR	510	0	0
APR/MAY/JUNE	355	0	0

GOALS AND ACTUAL NEW CLUBS CUMULATIVE



- - CURRENT YEAR GOALS FOR NEW CLUBS
- - CURRENT YEAR ACTUAL NEW CLUBS
- ▲ - LAST YEAR ACTUAL NEW CLUBS

GOALS AND ACTUAL MEMBERS CUMULATIVE



- - MEMBER GROWTH NET GOAL
- - MEMBER GROWTH ACTUAL
- ▲ - LAST YEAR MEMBERSHIP ACTUAL

DROPPED CLUBS: 1	318 CLUBS OF 700 ADDED 1 OR MORE NEW MEMBERS	GENDER DISTRIBUTION
		MALE 14,002 (74.02%)
		FEMALE 4,914 (25.98%)
DROPPED MEMBERS	CLICK HERE FOR CUMULATIVE MEMBERSHIP DATA	TOTAL FAMILY UNIT MEMBERS 7,593
DECEASED 21		FAMILY MEMBERS PAYING HALF DUES 4,392
CLUB CANCELLED 18		
OTHER 990		
TOTAL 1,029		